

Kendall Dual Enrollment Color Course Syllabus Spring of 2019

Color: Course Number: KCFN 112
January 7th - May 2nd
Mon. & Thurs. 2:45 – 5:15

Instructor: Tricia Erickson
Phone: 635-6153 Ext. 28302
Email: terickson@nvps.net



Course description and philosophy

Color class will meet for 2 - two and a half hour studio sessions per week. This time will be used for lectures, demonstrations, critiques and dialogues, as well as an opportunity for students to work on projects in class and consult with me. You are expected to attend every class, to arrive on time and be prepared. During the class time that is allotted to studio work, you are expected to be working on the assignment that is current for that class. You will also be expected to work outside of class 4 – 8 hours per week.

Attendance Policy

Attendance is critical to your success. You are allowed **two absences**. Each absence, starting with your third, will result in a **full grade point reduction** (ex. A to B).

Your attendance is strictly required in this class. There is too much material to be covered, assignments are often short in duration and change frequently and you will quickly fall behind if you make a habit of missing classes. It is also important to the learning process that you be present to interact with the rest of the class and that you are aware of what others in the class are working on.

***Tardiness** will also affect your grade. Arriving five minutes or more after class time begins will count as half an absence. Leaving five or more minutes early from class will also count as half an absence (unless specific plans have been made with me ahead of time). When we take a break during class, you are allowed fifteen minutes. Failure to return to class at the appropriate time will result in half an absence.

Arriving unprepared without required supplies will count as half an absence.

Course Objectives

This class should cover the following objectives:

1. Introduction to vocabulary, materials, and handouts.
2. Color (optically mixing) – additive and subtractive color systems (RGB, CMYK).
3. Color wheel, horizontal intensity scale, tint scale, double primary system RYB.
4. Achromatic, monochromatic and dominant color schemes.
5. Value: Value scale, light and dark contrast and missing colors.
6. Chromatic color relationships – warm and cool contrast – neutral grays.
7. Atmospheric perspective/color in space. Interaction of color temperature.
8. Seven systems of Contrast
9. Local Color with cast shadows and reflective light on still-life objects.

I would like everyone to gain a sense of confidence in their abilities to make appropriate color choices in compositions. Develop essential skills in mixing and understanding characteristics of colors. The exercises we complete should enable each student in helping to achieve these goals. We will spend a great amount of time on technical skills, and this will require everyone to keep an open mind and have patience. It will be worth it in the long run. I am looking forward to working together with you this semester.

Class Critiques/Discussions

Critiques will influence your final grade. Be willing to speak up and ask questions.

Preparedness

Come to class on time. Bring all of your supplies. Refrain from cell phone use until after class. Portable music devices will be used at a minimum.

Grading Policy

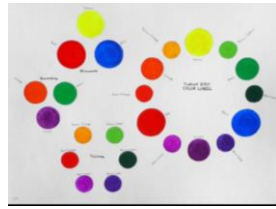
Projects will be graded on an individual basis when completed. They will be influenced by your attitude, attendance; effort, level of excellence, preparedness, class participation and creativity will all make a difference in your work, but will also be reflected in your grade. To receive an “A”, a student must consistently grow, ask relevant questions, and do excellent work beyond the minimum requirements. **If you come to class on time, have no more than two absences, and follow all of the directions, you will receive a “C”.** If you want a higher grade you must work beyond the expectations and push yourself to excel.

Breakdown of Grading Points

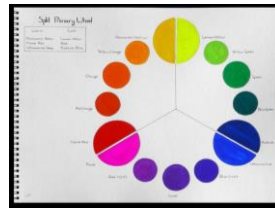
Color Notebook Entries & Homework: (250 pts)



Physical Properties of Light (15 pts)



12 Step Color Wheel (15 pts)



Split Primary Color Wheel (10 pts)



Warm vs. Cool Still Life (20 pts)



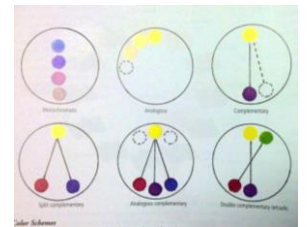
Hue, Value & intensity (30 pts)



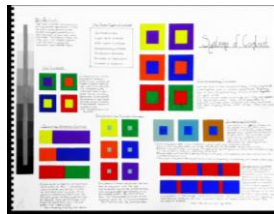
Chromatic Grays (20 pts)



Chromatic Lighting: The Barn (25 pts)



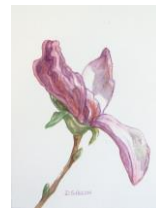
Color Schemes (10 pts)



Systems of Contrast (70 pts)



Magazine Cutout (15 pts)



Two 5x7 Local Color Nature Studies (20 pts each)

Project 1: Color Schemes - Pet Project (120 pts) (5X7 Sampler Paper Pack)



Achromatic

Monochromatic

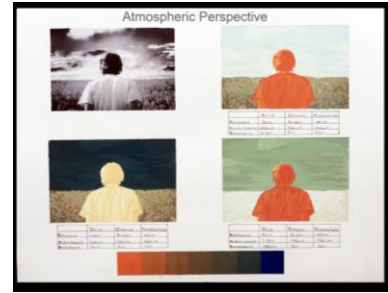
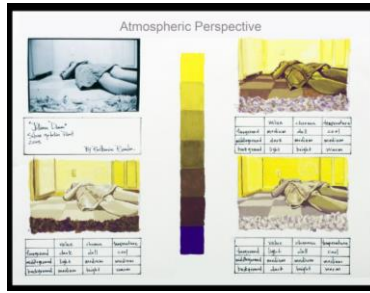
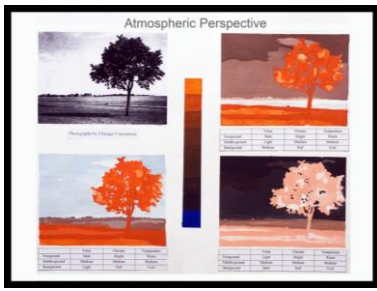
Analogous

Complementary

Split-Complementary

Triadic

Project2: Landscape Atmospheric Perspective Painting (80 pts) (Notebook Paper)



Project 3: Landscape Painting (100 pts) (22x30 Hot or Cold Press Paper)



Project 4: Self - Portrait Optical Mixing (150 pts) (22x30 Hot or Cold Press Paper)



Exam Project: In class Still Life using Local Color (200 pts) (22x30 Hot or Cold Press Paper)



Total Class Points = 900 pts

Materials

- **Text: Exploring Color by Nita Leland**
ISBN 0-89134-846-8 (at Service Repro or Amazon.com)
- **Holbein gouache with warm and cool mixing primaries** (see list below)
(These kits are available at Service Repro)
Open stock double primary list to mix brighter or duller secondaries:
 - cool: lemon yellow, or primary yellow WN
 - warm: perm. yellow deep, cadmium yellow medium
 - cool: rose, alizarin crimson, naphthal crimson, or primary red
 - warm: flame red, vermilion, cadmium red lt., or spectrum red WN
 - cool: ketsura blue, phthalo blue, sky blue, or primary blue WN
 - warm: ultramarine blue
 - **other pigments: yellow ochre, burnt sienna, titanium white (large tube), one small tube of black**
- **Quiller Wheel** (service repro and t-square or can print online)
- **White or blue artists tape, 1" or 3/4"**
- **Windsor Newton #995 Aquarelle brush, 1/2 " flat**
- **Good quality (Cotman) small rounds, #2, 4, 6, or 8 and a larger wash brush**
- Small round watercolor palette
- Sharpie Fine line Marker or Micron
- Small plastic T-Square
- Plastic palette knife
- **Cotman 12" x 16" watercolor pad** or 14" x 17" vellum or regular surface (not extra smooth) for color mixing studies
- **Service Repro "Kendall Watercolor Sample pack" 5" x 7"**
- **2 sheets of 22" x 30" 140 lb. Hot press water color paper**
- **1 sheets of 22" x 30" 140 lb. Cold press water color paper**
- 16" x 22" white 3/16" foam core to tape projects on for painting
- folder to keep syllabus and handouts, etc...
- *10" x 12" envelope attached inside back of notebook for photo sources (provided by teacher)
- 2 small plastic margarine containers (white)

***Supplies Listed in Bold must be purchased and brought to class by Mon. Jan. 19**

Additional Optional supplies:

- Masterson Sta-Wet palette and a little spray bottle
- Derwent Watercolor pencil 12 color set
- Supplementary Texts:

- Albers, Joseph - *Interaction of Color*
- Birren, Faber - *Color*
- Birren, Faber - *Creative Color*
- Itten, Johannes - *The Art of Color*
- Ocvirk, Otto G. - *Art Fundamentals, Theory & Practice*

Weekly Schedule

Date	Monday	Thursday
Week 1 Jan.7/10	Introduction: syllabus, supply list Buy “ Exploring Color ” by Nita Leland online Go to Service Repro to purchase supplies	Go over supplies & Experiment with supplies watch video: http://www.youtube.com/watch?v=Hbxy1W90_Wk <i>*Drop/Add Deadline is Jan. 11 to get full refund for class</i> *Paint Additive and Subtractive Color Systems in Notebook – Leland Pg. 15 HW 1 (15 pts): Finish Additive & Subtractive color systems with definitions in notebooks
Week 2 Jan.14/17	Share notebook homework *Paint Color Basics and 12 Step Color Wheel in Notebook– Leland pg. 24 HW 2 (15 pts): Finish 12 Step Color Wheel into Notebook.	No class – ½ day for Exam Week
Week 3 Jan.21/24	Share notebook homework Quiller wheel – video by Stephen Quiller and Note taking handout *Paint Split Primary Mixing System in Notebook – Leland Pg. 49 HW 3(30 pts): Finish Split Complementary Mixing System in Notebook. Create Two 5x7 Still life Paintings using only warm and only cool primaries – Use Marbles or Gummy Bears	Share Homework *Paint Physical Properties of Color: Hue, Value & Intensity in Notebook – Leland pg. 23 Continue Color Relationships: Munsell Color System *Value Scale – pg. 26 *Tint and Shade Strips – pg. 28 *Intensity-Chromatic Color Strips – pg. 29 HW 4 (30 pts): Finish Painting Hue, Value, and Intensity in Notebook

<p>Week 4 Jan. 28/ Jan. 31</p>	<p>No Class</p>	<p>Share Homework *Paint Chromatic Grays/Neutralization/Tones in Notebook – Leland pg. 50 HW 5 (20 pts): Finish Painting Chromatic Grays</p>
<p>Week 5 Feb. 4/7</p>	<p>Share Homework *Chromatic Lighting – “Barn Painting” – read Leland pgs. 109-114 HW 6 (25 pts): Finish “Barn Painting”</p>	<p>Share Barn Paintings Pass out colors to students for color scheme exercise & homework *Paint Color Schemes/Harmonies using their chosen color as main hue – Leland pg. 80 -Achromatic -Complementary -Monochromatic -Triadic -Analogous -Split Complimentary HW 7 (10 pts): Finish Color Schemes and chose Pet photos for next class</p>
<p>Week 6 Feb. 11/14</p>	<p>Share Homework Introduce Project 1 (120 pts): “Pet Paintings” (Dominant Hue Color Scheme Studies) Demo on “Dry Mounting” using rubber cement Choose 1 pet photo to paint 6 times using the 5x7 watercolor papers - each of the different color schemes – you must choose one <i>consistent</i> dominant hue.</p>	<p>Project 1: Pet Paintings Continue working on “Pet Paintings” HW: Finish and dry mount Pet Paintings on black foam core neatly using rubber cement</p>
<p>Week 7 Feb. 18/21</p>	<p>No class</p>	<p>Project 1: Pet Paintings - Class Critique Introduce Project 2 (80 pts)- *Atmospheric Perspective Landscapes– Leland Pg. 99 Guided Practice in class of 4 variations of one simple image using different values & temps in notebooks (3x5) HW: Choose 5x7 landscape style image with good foreground, middle ground, & background. Draw/trace 4 times in notebook for next class</p>
<p>Week 8 Feb.25/ Feb. 28</p>	<p>Continue Atmospheric Perspective Paintings – Due at end of class Project 2: “Atmospheric Perspective Landscapes” Class Critique</p>	<p>Class Meeting at Canonsburg Project 3 (100 pts): Canonsburg Landscape Painting on large Watercolor Paper (Hot or Cold press 18x24)</p>
<p>Week 9 March 4/7</p>	<p>No Class - Conferences</p>	<p>No Class Conferences</p>

Week 10 March 11/ 14	Continue to work on Project 3 using Monochromatic Color Scheme of choice	Finish Project 3 using Monochromatic Color Scheme of choice Project 3 Class Critique
Week 11 March 18/21	Introduce Systems of Contrast *Paint Systems of Contrast in Notebook – Leland pg. 103 Value contrast – pg. 94 Hue Contrast – pg. 93 Intensity Contrast – pg. 96 Temperature Contrast – pg. 98	*Continue to paint Systems of Contrast in Notebook- Leland Pg. 103 Complimentary Contrast – pg. 100 Simultaneous & Successive Contrast – pg. 103 Quantity/Extension Contrast – pg.102 HW 8 (70 pts): Finish painting Systems of Contrast in Notebooks
Week 12 March 25/28	Magazine cutout painting – Local Color practice HW 9 (15 pts): Finish Magazine Cutout Painting	NO CLASS (SPRING BREAK)
Week 13 April 1/4	SPRING BREAK	SPRING BREAK
Week 14 April 8/11	Share Homework 9 *Optical Mixing - pg. 103 Practice painting oranges using: -Primary colors -Secondary colors -Mixed palette HW: Bring in photo of self for next class	Project 4 (150 pts): Optical Mixing Self-Portraits Color Personality Quiz Workable Color Palettes – pgs. 59-73 Take photos in class and Begin Sketching on large watercolor paper using grids (18 x24)
Week 15 April 15/18	Continue to work on Optical Mixing Self-Portraits	Continue to work on Optical Mixing Self-Portraits HW: Finish Project 4
Week 16 April 22/25	Project 4 Class Critique Introduce Exam Project (200 pts): 18 x 24 Observational Still Life using Local Color (Use 22x28 Hot or Cold Press Paper)	Continue to work on Exam Project HW: Finish Exam Painting
Week 17 April 29/ May 2	Continue to work on Exam Project HW: Finish Exam Painting	LAST CLASS (only 2:45-3:45) Exam Project Critique & Final Grades
Week 18 May 6	NHS ART SHOW WEEK Opening Reception: Monday, May 6th 5:00-7:00pm	NHS ART SHOW WEEK